



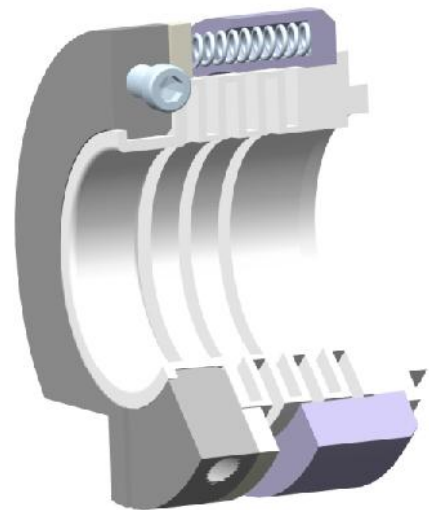
Seal Type 71 - PTFE Bellow

PRODUCT DESCRIPTION

Seal Type 71 Mechanical Seals are Specially Designed for using Extremely Corrosive Duties. All Metal Components are including springs are Isolated from the Sealed, Aggressive Medium. These Seal Design Faces are molded with Glass Filled PTFE with Highly Flexible PTFE Bellow. Simple checkout method function and cleaning possibility as this Mechanical Seal located easily accessible outside the pump.

DESIGN FEATURES

PTFE Bellow Mechanical Seal. Dual Directional Seal. Outside Mounted Seal. Hydraulically Balanced PTFE Bellow Mechanical Seal. Multi-Spring Design Seal.



MATERIALS

Seal Faces	: GFT, CFT, SiFT
Seat Faces	: Ceramic and SiC
Elastomer	: PTFE and GFT
MOC	: SS 316, Hast -C and Alloy 20
Bellow MOC	: PTFE + GFT Composite

OPERATING CAPABILITIES

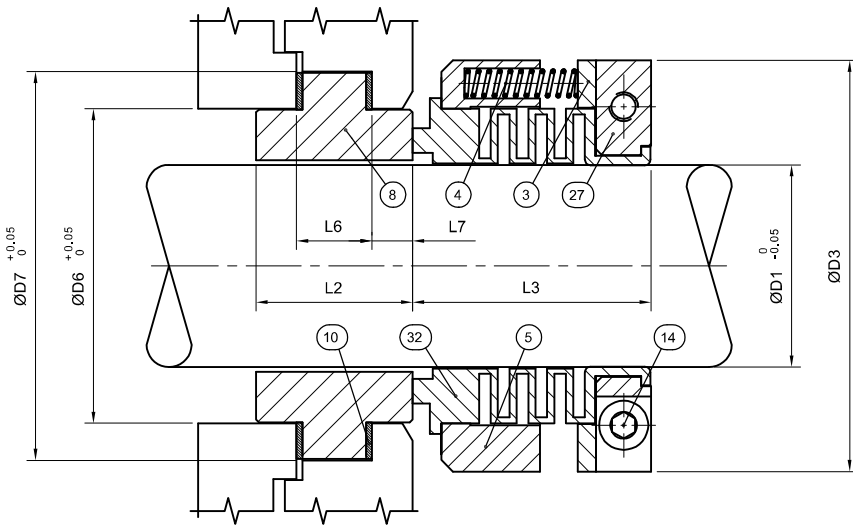
Shaft Dia.	: 16mm to 80mm
Pressure	: Up to 5 bar
Temperature:	-30°C to 110°C
Speed	: 3000 r.p.m.



Type - 71

PTFE Bellow

- | | |
|-----------------|--------------------|
| Part No. | Description |
| 3 | Thrust Ring |
| 4 | Spring |
| 5 | Spring Holder |
| 8 | Seat |
| 10 | Gasket |
| 14 | Allen Cap Screw |
| 27 | Clamp Ring |
| 32 | Composite Bellow |



SEAL SIZE		D3	D6	D7	L3	L2	L6	L7
inch	mm							
0.750	19.05	51.00	36.00	46.50	28.30	18.00	11.00	3.50
0.875	22.22	55.00	39.50	50.20	28.30	18.00	11.00	3.50
1.000	25.40	58.00	42.50	53.50	35.00	18.00	11.00	3.50
1.125	28.58	61.00	46.00	59.50	35.00	27.00	14.00	6.50
1.250	31.75	68.00	50.80	64.00	38.00	27.00	14.00	6.50
1.375	34.92	71.00	54.00	67.00	38.00	27.00	14.00	6.50
1.500	38.10	74.50	57.00	69.50	38.00	27.00	14.00	6.50
1.625	41.28	78.00	61.50	75.50	38.00	27.00	14.00	6.50
1.750	44.45	81.00	64.00	76.50	38.00	27.00	14.00	6.50
1.875	47.62	84.00	70.00	83.50	38.00	27.00	14.00	6.50
2.000	50.80	87.50	76.00	90.50	40.00	27.00	14.00	6.50
2.125	53.98	90.50	78.00	93.50	40.00	35.00	18.00	8.50
2.250	57.15	94.50	76.00	93.50	42.00	35.00	18.00	8.50
2.375	60.32	98.50	80.00	98.50	42.00	35.00	18.00	8.50
2.500	63.50	102.00	85.50	100.50	42.00	35.00	18.00	8.50

Due to continuous improvement specifications and dimensions may change without prior notice.



Type 71 (Metallic Part Coated)



Type 75 (Helical Spring Coated)